

SON

DIFFUSION

4 Audio-Performance SD-2
2 Audio-Performance SUB-3
2 Cerwin Vega CVA 118X
1 Dbx 260 DriveRack
3 Meyer MS-1000 Power Amplifiers
4 RCF ART 300A [Monitors]
1 RCF ART 200A [Monitors]

TRAITEMENT DU SIGNAL

1 Allen&Heath GL2400 console 22+2/4/2 - 6aux [4 prefade-post eq / 2 postfade]
1 TC Electronic M-One XL
1 TC Electronic D-Two
1 LA Audio EQ 231G [FOH]
2 EQ Dbx 1231 [Monitors]
1 Presonus ACP 88, 8 gate/comp
2 Behringer Mdx 2100 Composer, dual gate/comp

PRISE DE SON

1 Shure Beta 52A
2 AKG C 430
1 AKG C 1000 S
3 Sennheiser e604
2 Shure SM57
2 Sennheiser e606
3 Shure SM58
1 Shure Beta 58
1 DI Box Proel DB100 passif
2 DI Box stereo Cordial CES 02 passif
3 DI Box Bss ar133 actif
1 Multi 24/4 on stage

remarques

- console 22 xlr Inputs + 2 stereo In (FX Returns switchable on CD & Mp3)
- db limitation : 96 db (Ordonnance son et laser, OSLa du 28 févr 2007)

contact

Nicolas Bourban – nbourban@hotmail.com - +41 76 408 53 54

LIGHT

CONTROL

x 1 dortron dlc-c001 (Avolite Pearl)

DIMMING

x 2 dimmer 12 # 2/4K

x 3 dimmer 4 #

x 1 switch 4 #

STAGE

x 22 par 64

x 4 bulbs stick (d.i.y. sunstrip)

x 2 halogens as blinder

x 4 trackspot (scan)

x 1 pc

FACE

x 3 pc

x 4 par led

x 2 led scan

SOL

x 3 par 64

x 2 par led

x 2 halogen behind the drummer

DIVERS

x 1 smoke machine dmx

x 2 fans

x 1 black light neon

x 1 mirror ball

VIDEO

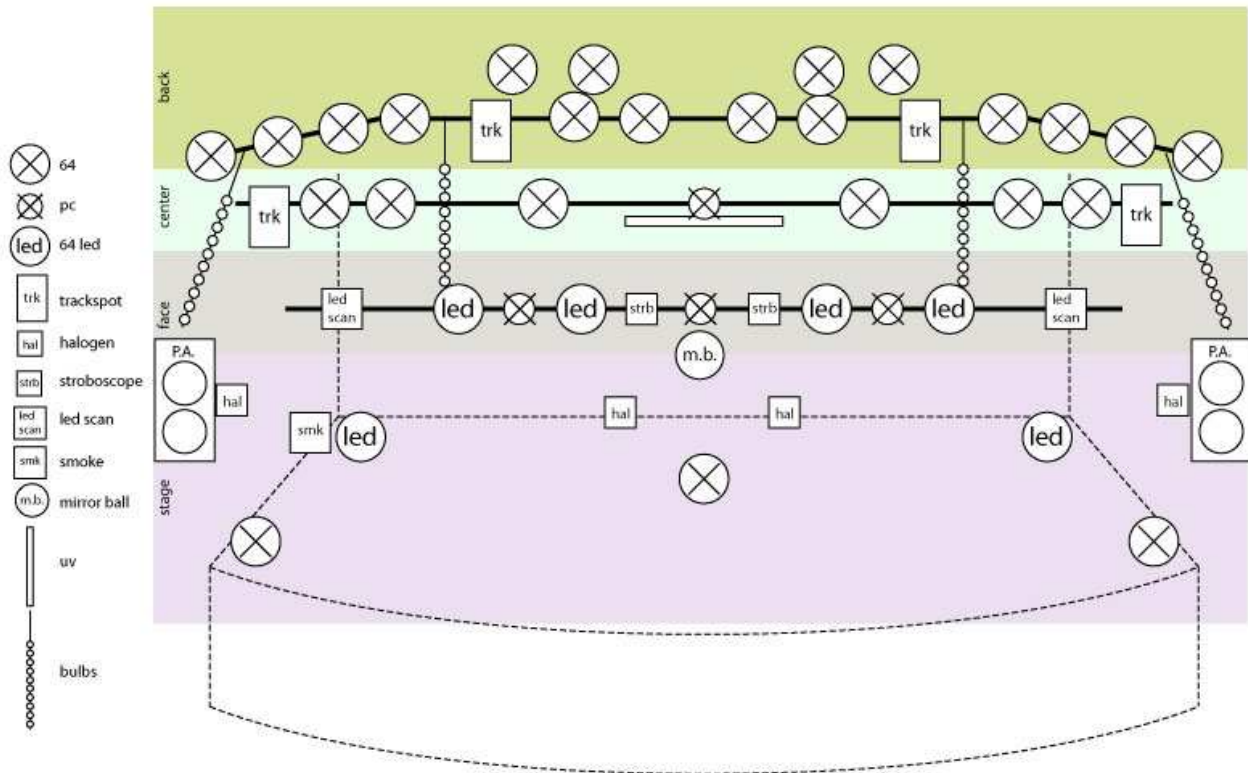
x 1 beamer NEC 2500 lumens (BNC at FOH, RCA on stage)

x 1 screen 300x200 (remote at the FOH)

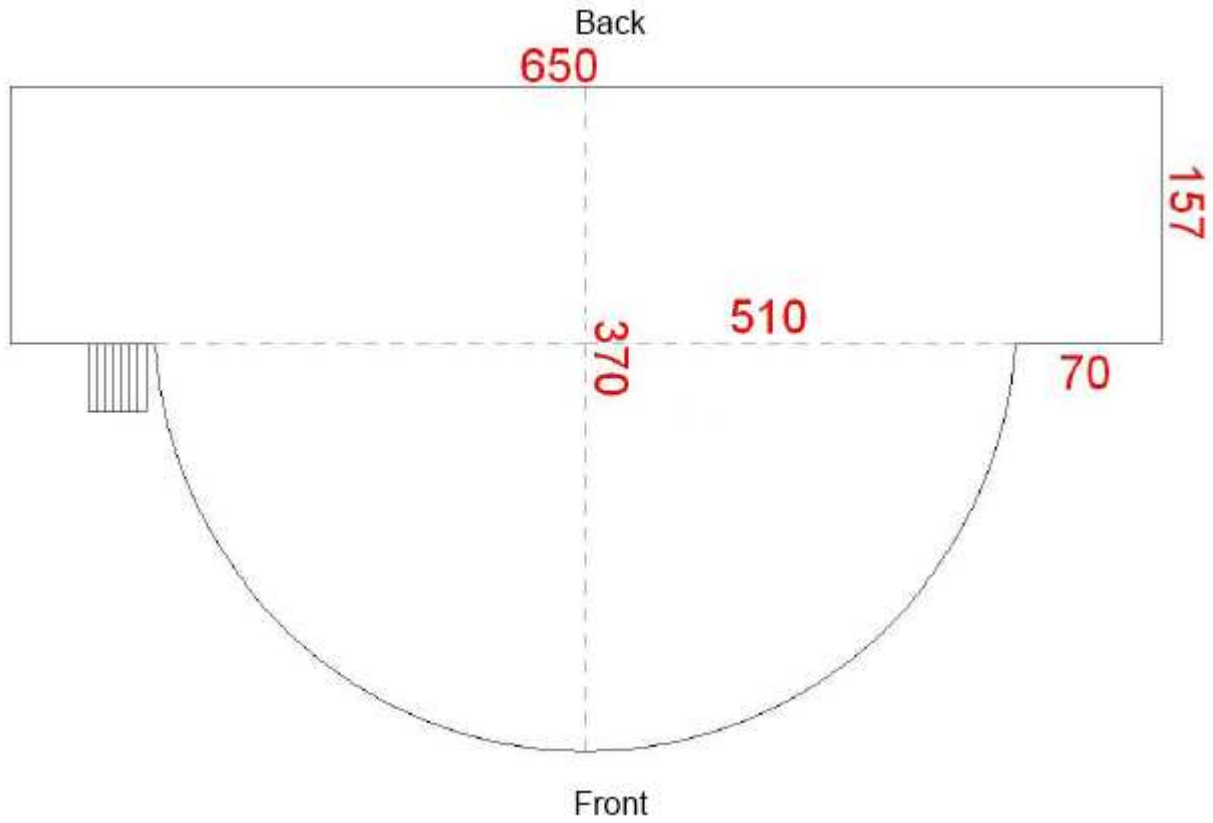
contact

Jean-Etienne Bettler – aroomusic@gmail.com - +41 79 855 87 66

LIGHT PLAN



DIMENSIONS SCENE (cm)



Haut. scène : 90
Haut. sous spots : 360
Capacité salle : 200